

ULTRA-PRO II™



Safe. Efficient. Guiding Patient Care.

CIVCO's Ultra-Pro II™ needle guidance system is an effective tool for improving needle visualization and procedure efficiency of both deep seated and superficial targets while ensuring confident clinical outcomes.

Clinical studies demonstrate use of the Ultra-Pro needle guide offers:

- ⊕ Benefits from the ability to pre-plan the needle approach⁹
- ⊕ Clinical versatility^{3,5,6,7,8,9}
- ⊕ Reproducible procedure technique with better tissue yield^{2,5}
- ⊕ Predictable needle trajectory and path for deep organ puncture⁵

“Real-time USG (ultrasound-guided) imaging supported by needle guide device is associated with better biopsy yield and fewer complications.”

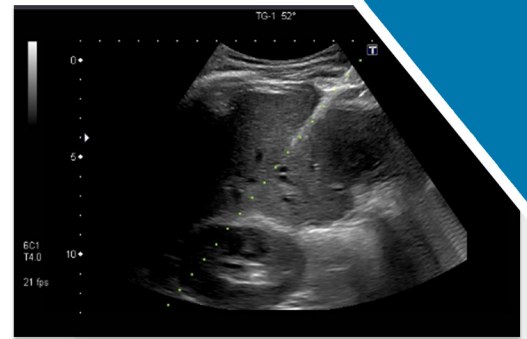
Clinical Kidney Journal, 2015

“Real-time Ultrasound-guided Percutaneous Renal Biopsy with Needle Guide by Nephrologists Decreases Post-biopsy Complications.”



IMPROVED NEEDLE VISUALIZATION.^{1,2,3}

- Increased clinical confidence with improved needle visualization during real-time imaging ^{1,2}
- Improved needle visualization within tissue which can increase patient safety ³
- “The role of US in peripheral nerve blocks continues to evolve rapidly, but in each case, success and safety partly depends on needle tip identification within tissue. The needle guidance systems are one way to improve that visibility; especially with novice clinicians.” ³



REDUCED PROCEDURE TIME.^{1,2,3,5,6,7}

- “There was a statistically significant time benefit with the use of probe guides compared with the freehand biopsy technique.” ¹
- “Reduced procedure time from guided biopsy will correlate with reduced needle manipulation and hence less tissue trauma and less patient discomfort.” ²
- “There was a significant reduction in the time for contrast agent instillation between the freehand and guided techniques up to a 50% time reduction, especially for operators with less experience performing biopsies.” ²

CONFIDENT OUTCOMES ^{2,4,6,7}

- “The guided technique provides a predicted needle trajectory that allows almost a single puncture of a deep organ.” ²
- Efficient and reproducible biopsy technique compared to freehand, ensures confident outcomes ²
- Decreases the number of passes required for adequate tissue yield and lowers the risk of developing major complication by 305% compared to freehand during renal biopsy ⁶

If you are interested in learning more about CIVCO's guidance solutions,
visit <http://clinical.civco.com>